

AN UNIQUE ALL-ANGLE VIEW
WITH POWERFUL LEDs –

VariKont L



VariKont L – A WINNER WITH A LONG TRADITION



The fact that tradition and innovative needn't be mutually exclusive is demonstrated by Pepperl+Fuchs with its new VariKont L family. For some time now, the name VariKont L by Pepperl+Fuchs is a synonym for sensors with extraordinary reliability and high flexibility. Continual improvements have matured the compact VariKont L into a sensor tested by the millions, now setting benchmarks again in its newest generation.

Display
Ready for operation

Switching state
Display

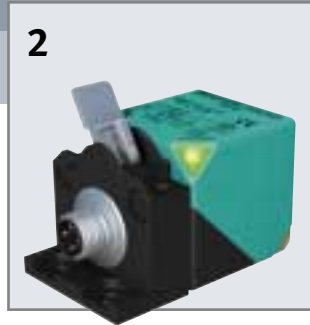
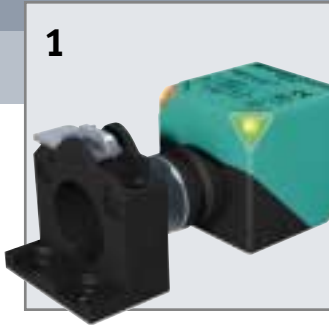


Display
Ready for operation

Switching state indicator

LEDs VISIBLE FROM ANY ANGLE

Whereas the view of the visual display used to be obstructed in unfavourable mounting locations in the past, the VariKont L in its current design provides a unique all-angle view. Thanks to the bright LEDs arranged in pairs on the corners, to display switching state and readiness for operation, there is no angle from which both displays cannot be seen.



TOOL-FREE INSTALLATION

To realize a tool-free fast mounting of the sensor head, the new VariKont L has a new type of fast clamping lever. Time-consuming screwing and costly installation times are now a thing of the past. With a simple twist of the lever, the sensor head is locked tightly into the socket and holds the switch securely in position even under heavy loads.



A FAMILY FOR ALL APPLICATIONS

The following features make the VariKont L flexible for use in a variety of industries, like the packaging, automotive, machine engineering and chemical industry, making it a family for all applications:

- With reduction factor 1
- With Atex Category 3G and 3D
- Resistant to welding
- With AS-Interface
- With metal housing
- IP69k
- Expanded temperature range
- With metal socket

ADDITIONAL OUTPUT VARIANTS:

- NAMUR
- Two-wire
- Three-wire
- Four-wire

HIGHLY FLEXIBLE

The sensor head can be turned and pivoted without tools, enabling a high degree of freedom in orientation of the sensor surface towards the desired target. In combination with the long switching range of up to 40 mm, the VariKont L offers its users the most flexibility possible.



Model number	Mounting method	Working distance	Output function	Output type
NBB20-L2-E2-V1	embedded	20 mm	pnp NO	3-wire
NBB20-L2-A2-V1	embedded	20 mm	pnp Antivalent	4-wire
NBB20-L2M-A2-V1	embedded	20 mm	pnp Antivalent	4-wire
NBB20-L2-A2-V1 3G3D	embedded	20 mm	pnp Antivalent	4-wire
NBB20-L2-A2-C-V1	embedded	20 mm	pnp Antivalent	4-wire
NBB20-L2-B3B-V1	embedded	20 mm	AS-Interface Spec 2.1	2-wire
NBB20-L2-Z0-V1	embedded	20 mm	pnp NO	2-wire
NCB20-L2-N0-V1	embedded	20 mm	NAMUR NC	2-wire
NRB20-L3-A2-C-V1	embedded	20 mm	pnp Antivalent	4-wire
NBN40-L2-E2-V1	non-embedded	40 mm	pnp NO	3-wire
NBN40-L2-A2-V1	non-embedded	40 mm	pnp Antivalent	4-wire
NBN40-L2M-A2-V1	non-embedded	40 mm	pnp Antivalent	4-wire
NBN40-L2-A2-V1 3G3D	non-embedded	40 mm	pnp Antivalent	4-wire
NBN40-L2-A2-C-V1	non-embedded	40 mm	pnp Antivalent	4-wire
NBN40-L2-B3B-V1	non-embedded	40 mm	AS-Interface Spec 2.1	2-wire
NBN40-L2-Z0-V1	non-embedded	40 mm	pnp NO	2-wire
NCN40-L2-N0-V1	non-embedded	40 mm	NAMUR NC	2-wire
NRN35-L3-A2-C-V1	non-embedded	35 mm	pnp Antivalent	4-wire

pnp switched high; npn switched low

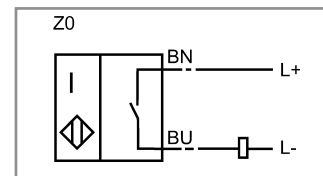
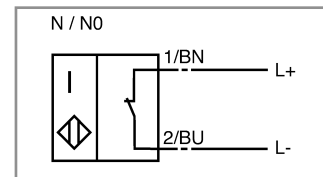
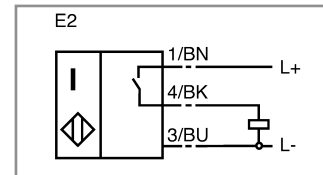
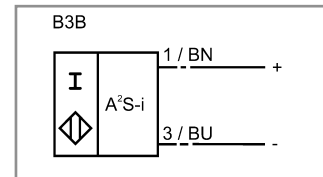
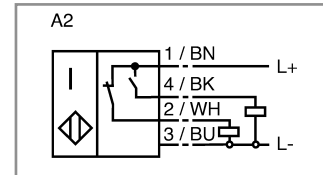


Metal socket without quick-release lever



Plastic socket without quick-release lever

OTHER OUTPUT VARIANTS ON REQUEST



Tel. 0621 776-1111 • Fax 0621 776-27-1111 • E-Mail: fa-info@de.pepperl-fuchs.com

Worldwide Headquarters

Pepperl+Fuchs GmbH
68307 Mannheim · Germany
Tel. 0621 776-0
E-Mail: info@de.pepperl-fuchs.com

USA Headquarters

Pepperl+Fuchs Inc.
Twinsburg, Ohio 44087 · USA
Tel. +1 330 4253555
E-Mail: sales@us.pepperl-fuchs.com

Asia Pacific Headquarters

Pepperl+Fuchs Pte Ltd.
Singapore 139942
Company Registration No.199003130E
Tel. +65 67799091
E-Mail: sales@sg.pepperl-fuchs.com

www.pepperl-fuchs.com

 **PEPPERL+FUCHS**
SENSING YOUR NEEDS